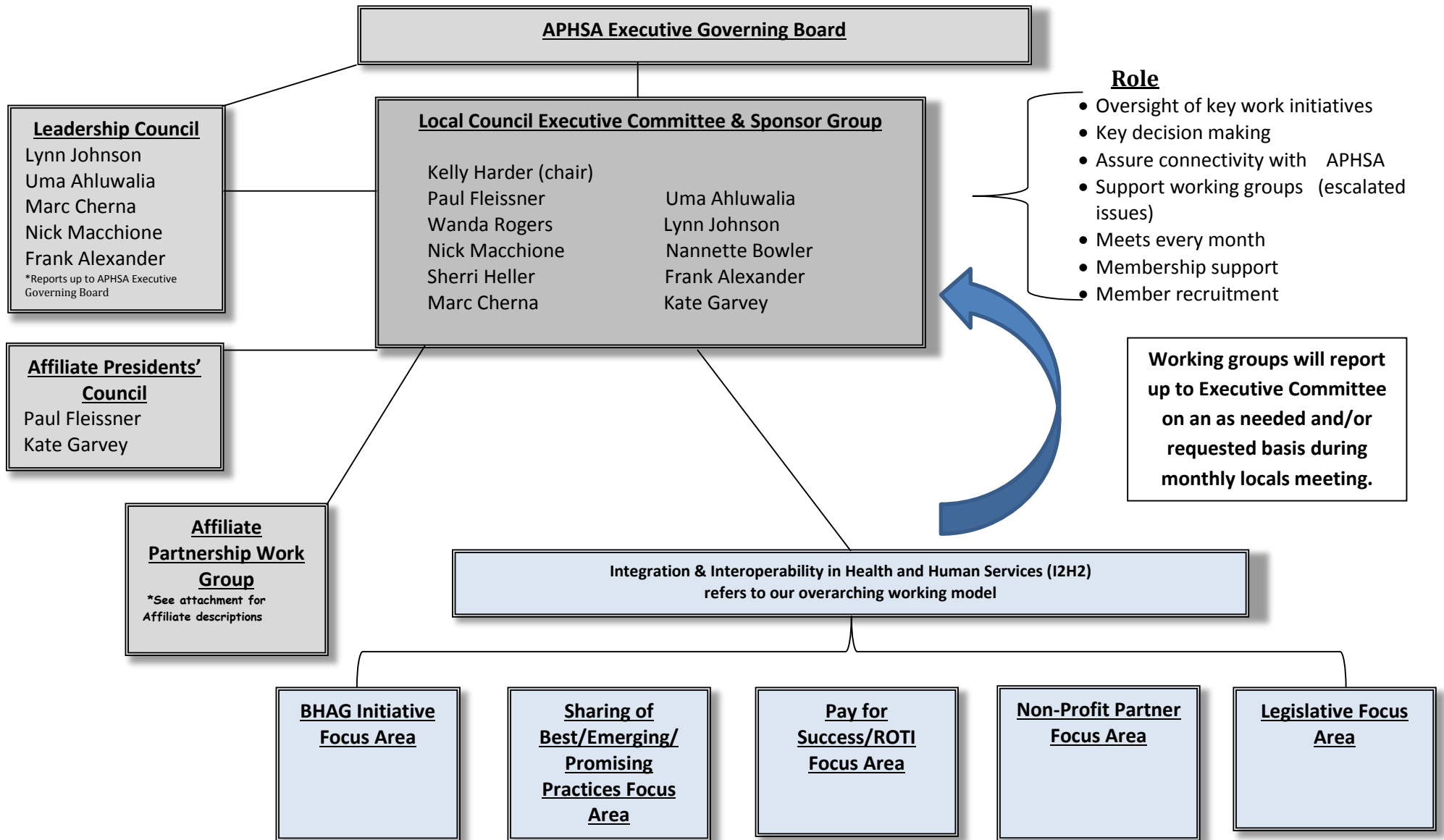


APHSAs Local Council Work Structure









* **APHSA Executive Governing Board** – The Executive Governing Board serves as the governing body of the Association and responsible for establishing and overseeing the overall strategic direction, priorities and objectives.

* **Leadership Council (LC)** – The Leadership Council serves as the overall coordinating entity within the APHSA structure for setting and overseeing implementation of the association’s policy and practice agenda.

* **Affiliate Presidents’ Council (APC)** – The Affiliate President’s Council serves as the coordinating entity within the APHSA structure to advance the mutual commitments in the affiliate and council charters. The APC ensures connectivity and operational consistency across the affiliates, councils and staff.

APHSA Affiliate Descriptions and Initiatives

Logo	Description	Initiatives and Objectives for 2015
	Association of Administrators of the Interstate Compact on the Placement of Children An affiliate and secretariat. Establishes legal and administrative procedures governing the interstate placement of children. Provides administrative, legal, and technical assistance to member states for the purpose of resolving problems of mutual concern, and formulating common policies, practices, and goals.	<ul style="list-style-type: none"> •Expand the NEICE to all ICPC jurisdictions. •Support implementation of laws to regulate or eradicate Rehoming and Human Trafficking. •Establish a position to either promote ratifying the New ICPC •Review and assess states’ repeal of the ICPC in Parent Placements.
	American Association of Public Welfare Attorneys Provides a forum at national, state, and regional levels for the discussion of legal matters pertaining to the administration of public welfare.	<ul style="list-style-type: none"> •Implementation of child day care legislation and child trafficking legislation. •Finding strategies to combat the shielding of income to make wealthy elderly persons eligible for Medicaid to pay for long term care. •Dealing with a surge of undocumented children into our child welfare systems. •Express concern about the costs of underfunded/unfunded mandates in Medicaid and Child Welfare systems.
	American Association of SNAP Directors Provides a national forum for discussing policies, laws and regulations at the state and federal levels that affect the administration of SNAP (formerly the Food Stamp Program).	<ul style="list-style-type: none"> •Negative Error Rate (CAPER)impacts both Program Policy and Quality Control •Federal Data Hub that impacts SNAP and Medicaid •Possible amendments or changes to Farm Bill that impacts Human Services
	Center for Workers with Disabilities Helps states implement the Ticket to Work and Work Incentives Improvement Act of 1999 (TWWIIA) and related efforts intended to enhance employment opportunities for persons with disabilities.	<ul style="list-style-type: none"> •Not active
	IT Solutions Management for Human Services Promotes understanding within the field, exchanges technical and design information, and promotes the goals of APHSA.	<ul style="list-style-type: none"> •Development and information sharing on Medicaid and HS E&E systems •NIEM development for a variety of human service programs •Expanded access to FDSH
	National Association of Public Child Welfare Administrators Works to enhance and improve public policy and administration of services for children, youth, and families.	<ul style="list-style-type: none"> •Results Based Funding in Child Welfare (child welfare finance reform) •Implementation Preventing Trafficking and Strengthening Families Law •Monitoring and tracking CFSR Round III •Release Report on Continuous Quality Improvement
	National Association for Program Information and Performance Measurement Promotes and enhances excellence in the planning and administration programs through the development, collection, analysis, evaluation of program data, outcomes and performance information.	<ul style="list-style-type: none"> •Work closely with FNS regarding the use of the Auto 380 and impact on states •Work closely with stakeholders regarding the impact of the new Farm Bill •Work to provide best practices to reduce improper payments, improve delivery, accuracy and integrity and upcoming program changes, legislative updates
	National Association of State Child Care Administrators Enhances the capacity of child care administrators, to improve the quality of child care programs and to contribute to APHSA policy development.	<ul style="list-style-type: none"> •Awaiting OCC guidance on expectations for implementation, timelines, etc. •New CCDF State Plan format - Plans are due by 7/1/15. •Serve as a conduit to OCC in having states’ questions/concerns regarding CCDBG be heard and addressed.
	National Association of State TANF Administrators Enhances professional development, to share promising practices among state members and to help guide the development of APHSA policy in the areas of TANF and welfare reform.	<ul style="list-style-type: none"> •TANF reauthorization •Amend TANF work verification rules to allow greater participation in career skills training •Final regulations implementing TANF EBT restrictions •Responding to NPRM for WIOA •Shaping/participating in ACF’s Systems to Family Stability policy academy
	National Staff Development and Training Association Provides a national forum for the discussion of staff development and training issues at the federal, state, and local levels.	<ul style="list-style-type: none"> •Demonstrate the impact of staff training, development , and evaluation •Share and increase access to our resources, connections, and knowledge base •Broaden membership to reflect the changing needs of the workforce

*APHSA serves as the secretariat for the Association of Administrators of the Interstate Compact on Adoption and Medical Assistance, which is a nonprofit corporation established in 1986 to facilitate the administration of the compact.